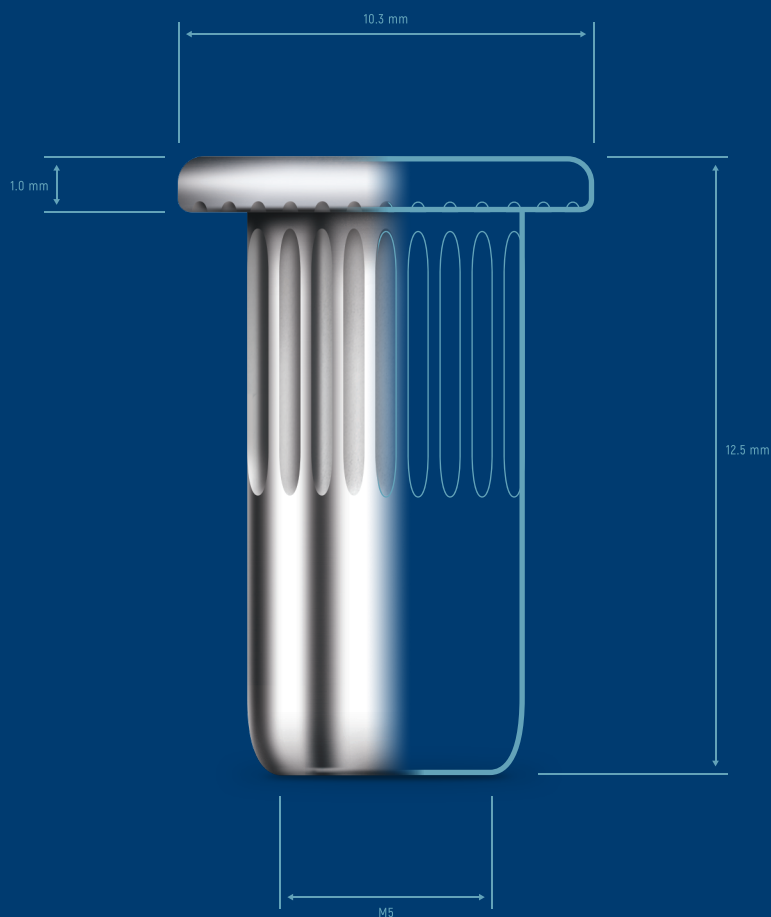


# PATTA<sup>®</sup>



## Rivet Nuts

Our components, your key

# Index

About Blind Rivet Nut

05

Flat Head, Round Body, Open-end



07

Reduced Head, Round Body, Open-end



08

Flat Head, Half Hexagon Body, Open-end



09

Flat Head, Round Body with Knurls, Open-end



10

Reduced Head, Round Body with Knurls, Open-end



11

Reduced Head, Hexagon Body, Open-end



12

Flat Head, Hexagon Body, Open-end



13

NH-901



14

Product Range



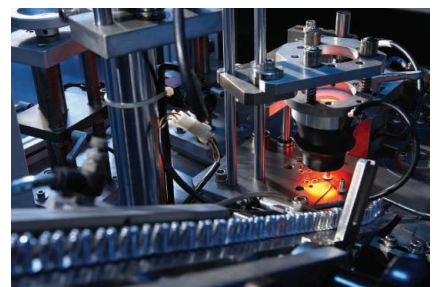
15

Certifications



18

\* Technical data shown in the specification table is subject to change without prior notice as per continuous product development and improvement.







# Grip Forever

Our Components, Your Key

## Professional

provide expertise and know-how in fastener and construction hardware industry

## Active

keep improving quality product and service to customers

## Trustworthy

with 30-year experience under well-known "PATTA" brand name

## Typical

provide unique fastener problem solving

## Ambitious

provide a series of activities to meet customers expectation

# About Blind Rivet Nut

## Overviews:

Blind rivet nuts also known as blind threaded inserts, rivet nuts, blind threaded rivets & threaded nuts are designed to provide strong thread in thin panel sections. The reason they are called "Blind" is because they can be installed from one side of the panel. Access to both sides is not required.

There are two basic types of blind rivet nut: Standard and Heavy Duty.

The Standard Type is used for most applications where strong threads are required for blind applications. Most commonly known as blind threaded inserts, they are installed using a spin technique and tooling. A pneumatic tool is used to draw the fastener in, compressing the unguarded portion of the fastener wall. The bulge that is created presses against the panel creating a clamping force which tightly grips the sheet.

The Heavy Duty type, most commonly known as rivet nuts are designed for the most demanding applications. They are installed from one side using a spin/pull technique. A hydraulic or pneumatic tool is used to draw the fastener in, creating the bulge and clamping force.

## Advantage & Technology:

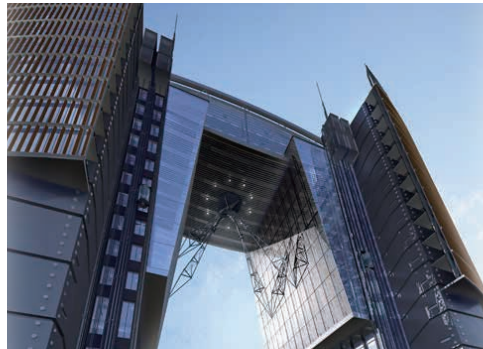
- Fast, easy installation
- Strong, permanent threads in thin panel
- Blind, one-side installation
- Installs anytime during production
- Works in close-to-edge applications
- Attaches to panels of any hardness

## Applications of Rivet Nut:

- Outdoor



- Building Construction



- Vehicle



- Marine Equipment



# About Blind Rivet Nut

Head Style:



The blind rivet nut has three popular styles, they are flat head, reduced head and countersunk head. The flat head are the most commonly used head type that provides a stronger resistance to push out & torque out due to the larger surface contact area. The reduced head provides a near flush installation eliminating the need to countersunk the hole. For application needing a countersunk hole and increased push put resistance, the countersunk style will best meet these requirements. Other head styles are also available by special order.

Body Style:



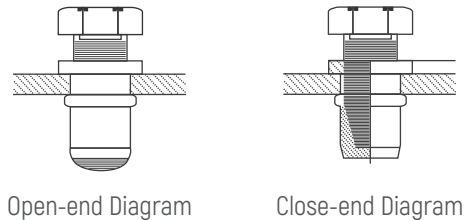
Open end style are the most commonly used blind rivet nut as the length of screw or bolt can be free to chose. Close end style are using in the area where no liquid is to be allowed to pass between the screw and the blind rivet nut.

If there will be significant torque force in your application, or if you are using a locking feature on the mating bolt, such as a nylon arch, full hex or semi-hex style are recommended to prevent hole spin. For many applications, a round head will suffice eliminating the need for a hex hole. For increased spin resistance in soft materials a knurled round body is recommended.

Screw Length:

In the open end body, the screw must project at least one thread length beyond the rivet nut.

In the close end body style, the maximum shaft length of the screw are determine by following diagram:



Material selection:

Material are supplied in steel, aluminium and stainless steel as depends.

The choice of material decide the strength of the blind rivet nut and the level of corrosion resistance of the end product. Different selection of material depend on the workplace needed

Material size (m/m)	Aluminum		Steel		Stainless Steel	
	Shear (N)	Tensile (N)	Shear (N)	Tensile (N)	Shear (N)	Tensile (N)
<b>M4</b>	1500	4800	1800	8000	3000	11000
<b>M5</b>	1800	6600	2700	10500	4500	15000
<b>M6</b>	2700	10000	4250	18000	6500	>27000
<b>M8</b>	3600	14000	5200	28000	9700	>30000
<b>M10</b>	4000	14000	6500	>30000		

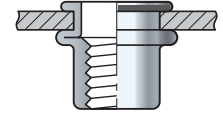
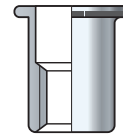
# Flat Head, Round Body, Open-end

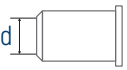

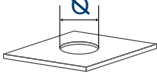
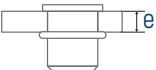
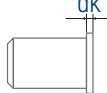

## Material

- Aluminum
- Steel
- Stainless Steel

## Features

- High clamping force
- The loading is spread over a large area
- Application for thin or soft materials



							
	<b>Dia(d)</b> mm/inch	<b>L</b> mm/inch	<b>Hole Dia</b> $\varnothing^{+0.1}_{-0}$	<b>Grip range(e)</b> mm/inch	<b>dk</b> mm/inch	<b>do</b> mm/inch	
<b>M4</b>	11.5 13.5	.453 .531	6 (.236)	0.5-2.0 2.0-4.0	.020-.079 .079-.157	0.8 (.031)	8.5 (.335)
<b>M5</b>	12.5 13.5	.492 .531	7 (.276)	0.5-2.5 2.5-3.5	.020-.098 .098-.138	1.0 (.039)	10.0 (.394)
<b>M6</b>	15.0 16.5	.590 .650	9 (.354)	0.5-2.5 2.5-4.0	.020-.098 .098-.166	1.5 (.059)	12.3 (.484)
<b>M8</b>	18 20	.709 .787	11 (.433)	1.0-3.0 3.0-5.0	.039-.118 .118-.197	1.5 (.059)	14.3 (.563)
<b>M10</b>	20 21.5 23.5	.787 .846 .925	13 (.512)	1.0-2.5 2.5-4.0 4.0-6.0	.039-.098 .098-.157 .157-.236	1.6 (.063)	16.3 (.642)

# Reduced Head, Round Body, Open-end

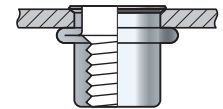
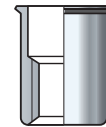
## Material

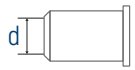
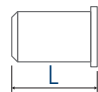
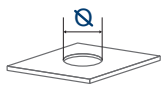
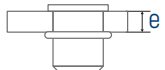
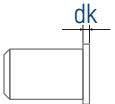

- Aluminum
- Steel
- Stainless Steel



## Features

- High clamping force
- Screw length can be varied
- Small head projection without countersinking
- Application for flange flush is desired or clamping loading is limited



 <b>Dia(d)</b> mm/inch	 <b>L</b> mm/inch		 <b>Hole Dia</b> $\emptyset^{+0.1}_{-0}$	 <b>Grip range(e)</b> mm/inch		 <b>dk</b> mm/inch	 <b>do</b> mm/inch
<b>M4</b>	11.0 13.0	.433 .512	6 (.236)	0.5-2.0 2.0-4.0	.020-.079 .079-.157	0.5 (.020)	7.0 (.276)
<b>M5</b>	12.0 14.0	.472 .551	7 (.276)	0.5-2.0 2.0-4.0	.020-.079 .079-.157	0.6 (.023)	8.0 (.315)
<b>M6</b>	14.0 15.5	.551 .610	9 (.354)	0.5-2.5 2.5-4.0	.020-.098 .098-.016	0.6 (.023)	10.0 (.393)
<b>M8</b>	16.5 18	.650 .709	11 (.433)	1.0-2.5 2.5-4.0	.039-.098 .098-.157	0.8 (.031)	12.0 (.472)
<b>M10</b>	17.5 19	.689 .748	13 (.512)	1.0-2.5 2.5-4.0	.039-.098 .098-.157	0.8 (.031)	14.0 (.5513)

# Flat Head, Half Hexagon Body, Open-end

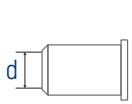
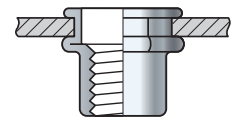
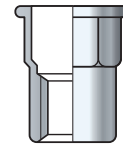
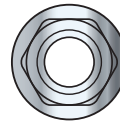
**Material**

- Steel
- Stainless Steel



**Features**

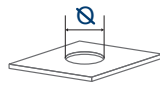
- High turning resistance
- Screw length can be varied
- High clamping force
- Application for area where high strength of turning is required



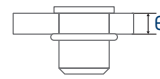
**Dia(d)**  
mm/inch



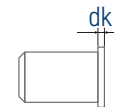
**L**  
mm/inch



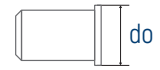
**Hole Dia**  
 $\emptyset^{+0.1}_{-0}$



**Grip range(e)**  
mm/inch



**dk**  
mm/inch



**do**  
mm/inch

	L		Hole Dia	Grip range(e)		dk	do
	mm	inch	$\emptyset^{+0.1}_{-0}$	mm	inch	mm	inch
<b>M4</b>	11	.433	6	0.5-2.0	.020-.079	0.8	9
	12.5	.492	(.236)	2.0-3.5	.079-.138	(.031)	(.354)
<b>M5</b>	13	.236	7	0.5-2.5	.020-.098	1.0	10
	14.5	.571	(.276)	2.5-3.5	.098-.138	(.039)	(.394)
<b>M6</b>	15.0	.590	9	0.5-2.5	.020-.098	1.5	12.3
	16.5	.650	(.354)	2.5-4.0	.098-.016	(.059)	(.484)
<b>M8</b>	18	.709	11	1.0-3.0		1.5	16
			(.433)	(.039-.118)		(.059)	(.630)

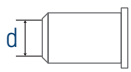
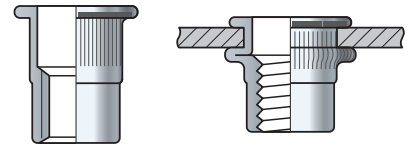
# Flat Head, Round Body with Knurls, Open-end

## Material

- Aluminum
- Steel
- Stainless Steel

## Features

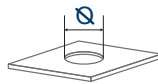
- High clamping force
- Increase turning resistance
- Application for soft material like aluminum, plastic and etc



**Dia(d)**  
mm/inch



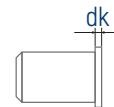
**L**  
mm/inch



**Hole Dia**  
 $\varnothing^{+0.1}_{-0}$



**Grip range(e)**  
mm/inch



**dk**  
mm/inch



**do**  
mm/inch

	L		Hole Dia	Grip range(e)		dk	do
	mm	inch	$\varnothing^{+0.1}_{-0}$	mm	inch	mm	mm
<b>M4</b>	11.3	.445	6	0.5-2.0	.020-.079	0.8	9
	12.5	.492	(.236)	2.0-3.5	.079-.138	(.031)	(.354)
<b>M5</b>	13	.512	7	0.5-2.0	.020-.079	1.0	10
	14.5	.571	(.276)	2.0-3.5	.079-.138	(.039)	(.394)
<b>M6</b>	15.0	.590	9	0.5-2.5	.020-.098	1.5	12.3
	16.5	.650	(.354)	2.5-4.0	.098-.166	(.059)	(.484)
<b>M8</b>	18	.709	11	1.0-3.0	.039-.118	1.5	14.3
	20	.787	(.433)	3.0-5.0	.118-.197	(.059)	(.563)



# Reduced Head, Round Body with Knurls, Open-end

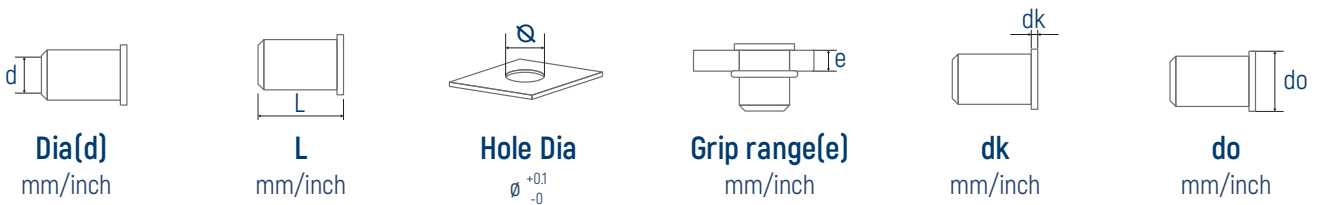
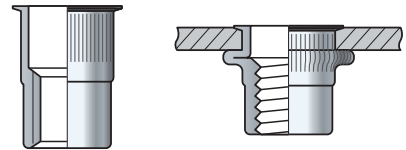
**Material**

- Steel
- Stainless Steel



**Features**

- High turning resistance
- Screw length can be varied
- High clamping force
- Application for area where high strength of turning is required



	L		Hole Dia	Grip range(e)		dk	do
	mm	inch	mm	mm	inch	mm	mm
<b>M4</b>	11.0	.433	6	0.5-2.0	.020-.079	0.5	7.0
	12.5	.492	(.236)	2.0-3.5	.079-.138	(.020)	(.276)
<b>M5</b>	12.0	.492	7	0.5-2.0	.020-.079	0.6	8.0
	13.5	.531	(.276)	2.0-3.5	.079-.138	(.023)	(.315)
<b>M6</b>	14.0	.472	9	0.5-2.5	.020-.098	0.6	10.0
	15.5	.512	(.354)	2.5-4.0	.098-.157	(.023)	(.394)
<b>M8</b>	17.0	.669	11	1.0-3.0	.039-.118	0.8	12.0
	18.5	.728	(.433)	3.0-5.0	.118-.197	(.031)	(.472)

# Reduced Head, Hexagon Body, Open-end

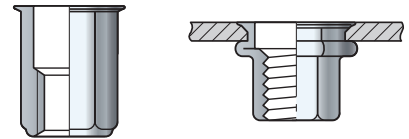
## Material

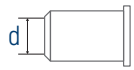

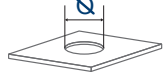
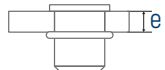
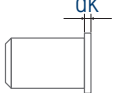

- Steel
- Stainless Steel



## Features

- High turning resistance
- Screw length can be varied
- High clamping force
- Application for area where high strength of turning is required



 <b>Dia(d)</b> mm/inch	 <b>L</b> mm/inch	 <b>Hole Dia</b> $\varnothing^{+0.1}_{-0}$	 <b>Grip range(e)</b> mm/inch	 <b>dk</b> mm/inch	 <b>do</b> mm/inch
<b>M4</b>	10.5 .413	6 (.236)	0.5-2.0 .020-.079	0.5 (.019)	7.0 (.276)
<b>M5</b>	14.5 .571	7 (.276)	0.5-3.0 .020-.118	0.6 (.024)	8.0 (.315)
<b>M6</b>	16.0 .630	9 (.354)	1.0-3.0 .039-.118	0.6 (.024)	10.0 (.394)
<b>M8</b>	18.0 .709	11 (.433)	1.0-3.0 .039-.118	0.8 (.031)	12.0 (.472)
<b>M10</b>	23.5 .925	13 (.512)	2.0-5.0 .079-.197	0.8 (.031)	14.5 (.571)

# Flat Head, Hexagon Body, Open-end

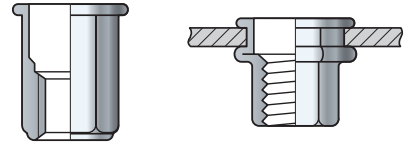
## Material

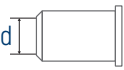

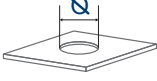
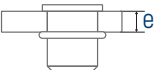
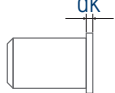

- Steel
- Stainless Steel



## Features

- High turning resistance
- Screw length can be varied
- High clamping force
- Application for area where high strength of turning is required



 <b>Dia(d)</b> mm/inch	 <b>L</b> mm/inch	 <b>Hole Dia</b> $\varnothing^{+0.1}_{-0}$	 <b>Grip range(e)</b> mm/inch	 <b>dk</b> mm/inch	 <b>do</b> mm/inch
<b>M4</b>	11.3 13 .445 .512	6 (.236)	0.5-2.0 2.0-3.5 .020-.079 .079-.138	0.8 (.031)	9 (.354)
<b>M5</b>	14 15 .551 .591	7 (.276)	0.5-2.5 2.5-3.5 .020-.098 .098-.138	1.0 (.039)	10 (.394)
<b>M6</b>	15.0 16.5 .590 .650	9 (.354)	0.5-2.5 2.5-4.0 .020-.098 .098-.157	1.5 (.059)	12.3 (.484)
<b>M8</b>	18 20 .709 .787	11 (.433)	1.0-3.0 3.0-5.0 .039-.118 .118-.197	1.5 (.059)	14.3 (.563)

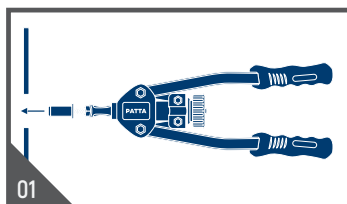
# NH-901

Tool Length :  
13 inch/330mm

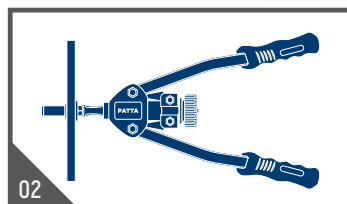
Mandrel Capacity :  
M3, M4, M5, M6, M8, M10, M12  
#6, #8, #10, #1/4", #5/16", #3/8", #1/2"

Standard Accessories :  
M3, M4, M5, M6, M8, M10,  
#6, #8, #10, #1/4", #5/16", #3/8"

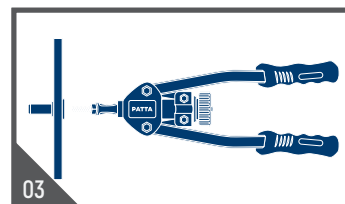
\*M12(#1/2) is also available for order.



1. Slip rivet nut in nozzle.



2. Slip rivet nut into hole and pull the riveter.



3. Push the riveter back to squeeze and you've a perfect fastening.

## Self Tapping Screws

---



## Drywall & Chipboard

---



## Fixings & Anchors

---



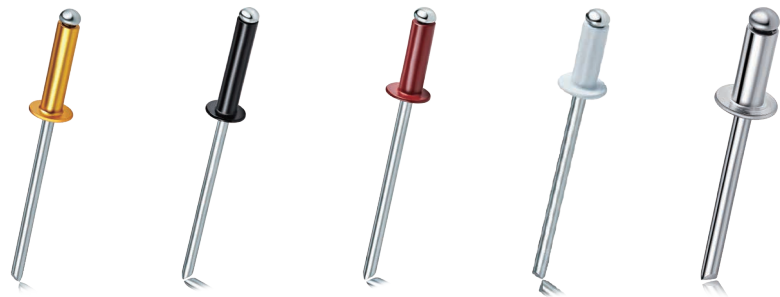
## Bolts & Nuts

---



## Blind Rivets

---



## Structural Rivets

---



## Rivet Nuts

---



## Tool Series

---



## Accessories

---



## Hardware

---



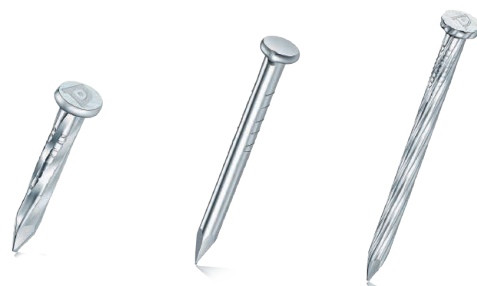
## Door & Window Series

---



## Nail Series

---





# Certifications

Quality assurance is our promise to every customer

ISO 9001



ISO 9001



ISO 14001



CE Marking



TS 16949



CAT ID : RN-201802

**PATTA International Limited**

15F No.110, San Duo 4th Rd, Kaohsiung 80247, Taiwan

T 886 7 3362278 | F 886 7 3369577 | E info@patta.com

[www.patta.com](http://www.patta.com)

**PATTA®**

